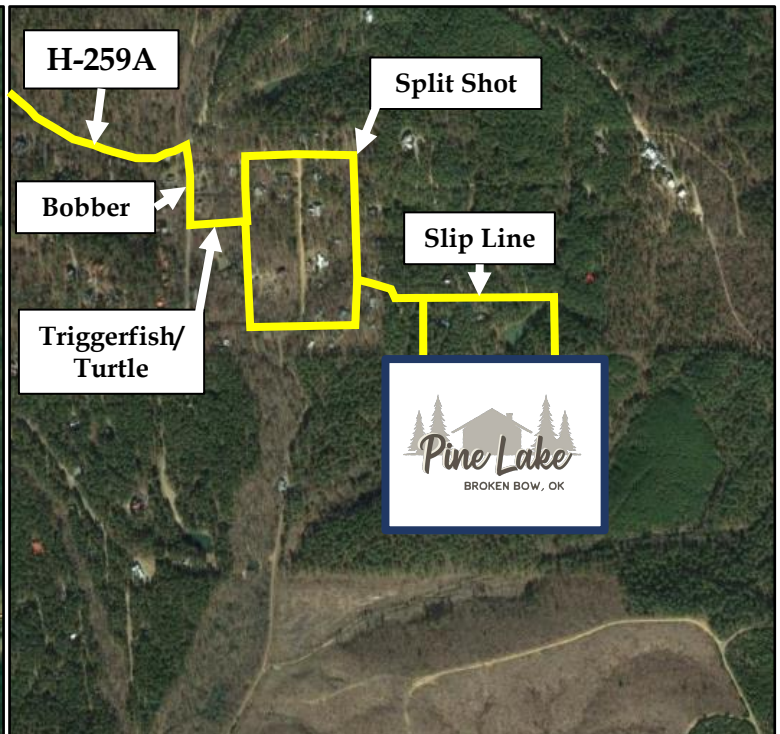




Driving Directions

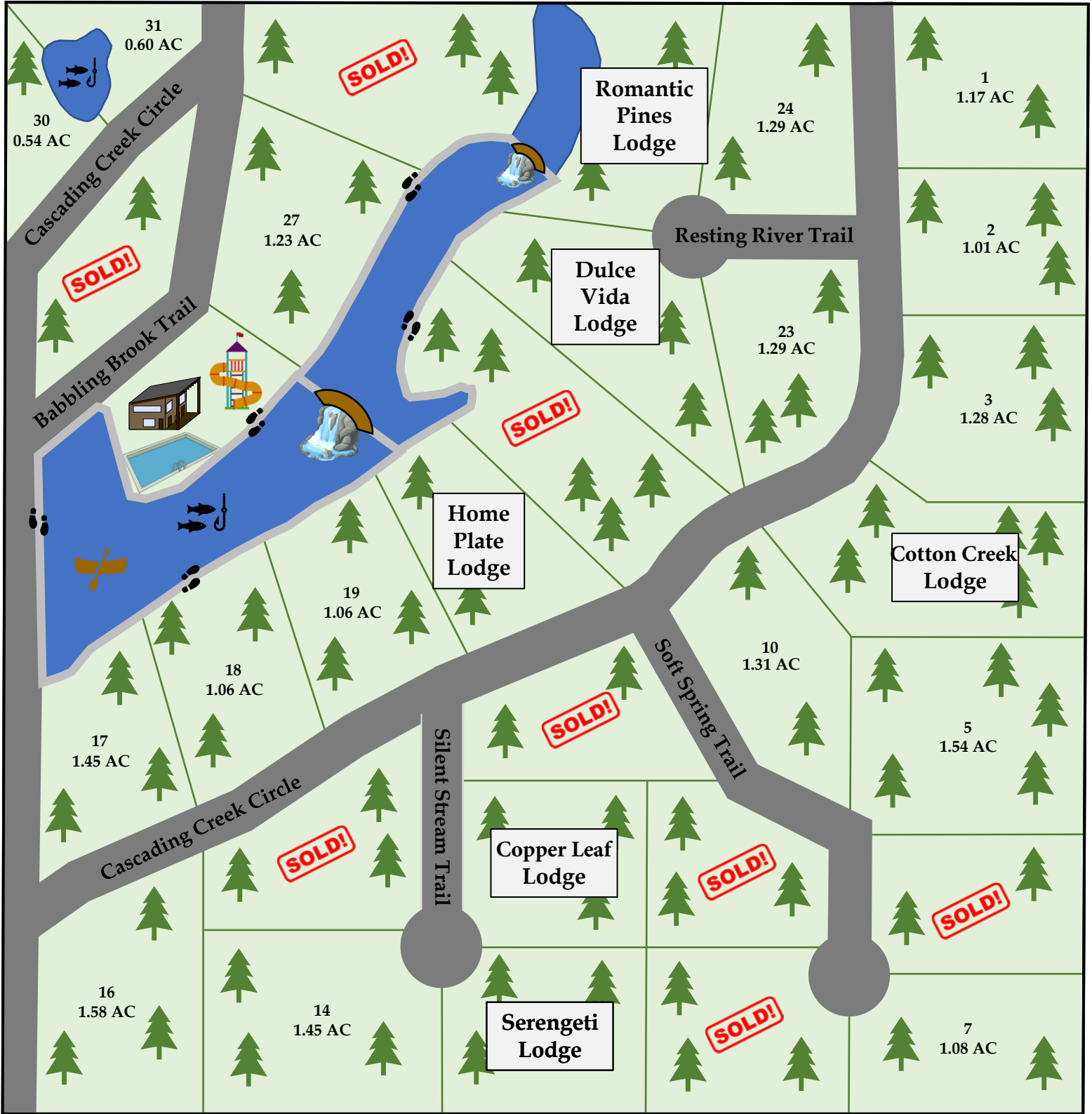
- From Broken Bow, travel north on Highway 259
- **Turn right onto Highway 259A**, heading east, and travel ~1.8mi (259A forms a loop, you will want to take the southern “leg”)
- **Turn right onto Bobber Rd.** (after a sharp turn, sign will say “Beaver’s Bend Village”), heading south, and travel 150 yards
- **Turn left onto Triggerfish Rd/Turtle Run Rd.** (the first stop sign), heading east, and travel 100 yards
- **Turn left or right onto Split Shot Cir.** (the first stop sign). This road forms a loop so you may turn either direction, and then curve around until you get to Slip Line Rd.
- **Turn onto Slip Line Rd.**, heading east, and travel until you see the second entrance sign for Pine Lake on the right (south) side. There are two entrances/signs for Pine Lake, the second entrance is closest to your lodge
- Once in Pine Lake, please use the map to guide you to your lodge



If you have any questions, please contact Property Management:
580-236-9954

Pine Lake

BROKEN BOW, OK



	Clubhouse WINTER 2020		Playground FALL 2020		Swimming Pool SPRING 2021
	Canoes, Paddle Boats		Stocked Lakes		Sold - home in progress